

XR4-5-6-7 - ECU (controller) replacement instructions

Before beginning make sure the battery is disconnected from the cart and the main power switch is OFF.

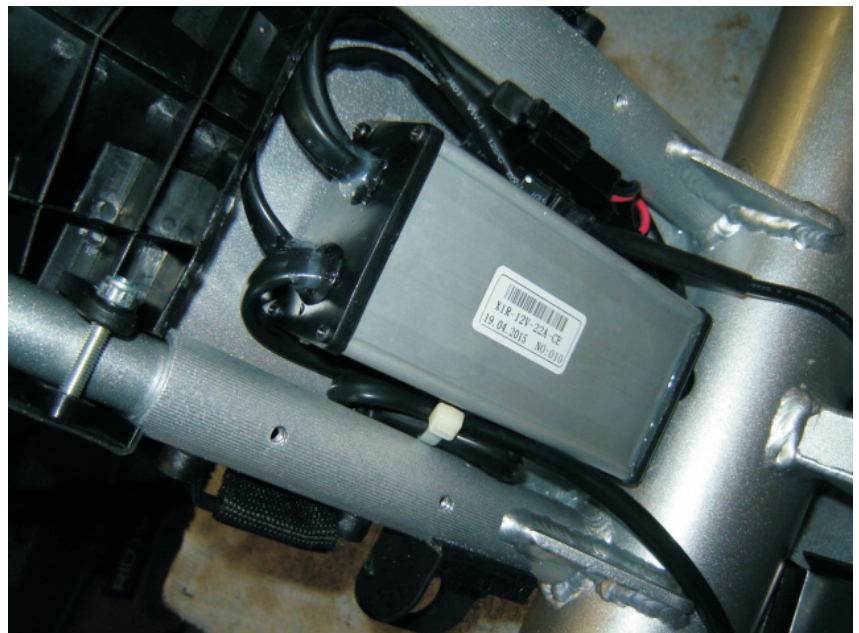
1. Remove the 4 screws from ECU cover under the battery tray.
2. Disconnect the 2 motor wire connectors and the multi-pin wiring harness connector. Note the location of these as you will need to connect them the same in the new ECU. The short lead from the ECU is the right motor lead.
3. Remove the large nut holding the battery connection to the plastic bracket on the side of the battery platform.
4. Replace the old ECU with the new one making sure you connect and route the wires the same way they were on the old one.
5. Re-install the battery connection in the plastic bracket and screw the nut back in place same as it was.
6. Replace the ECU cover - then suspend the cart with wheels off the ground, connect the battery and test all functions, both manual and remote.

Please contact us if you have any problems or questions. info@parcaddy.ca - or call Mike at 705-770-2828

Route the wiring as shown in the pic on the right.

Be careful not to slice any wires with the edge of the metal protective cover when re-installing or tightening.

Make sure the lower flap slides under the ECU and the upper flap slides over the wires allowing the screw holes to line up.



**Par Caddy Canada Inc.
Barrie, ON
705-770-2828**