

Par Caddy MC101R Tech Bulletin

Drive Wheel Issues

Problem: Wheel is wobbly or will not fully engage the drive hub or slide easily onto the axle.

Cause: The probable cause is that the outer rolling bearing inside the wheel hub has jarred loose and is slightly out of position.

Solution:

1. Remove the wheel from the axle and get it up on a workbench.
2. Remove the 6 small screws from the white plastic disc surrounding the hub. This will expose the inside of the hub and the bearing.
3. Re-seat the bearing into the plastic inner wheel hub. To prevent further jarring loose of the bearing, put a small amount of glue or loctite around the plastic bearing housing before pressing or tapping the bearing back into place. Make sure not to get any glue on the rollers in the bearing. Tap it in gently with the handle end of a screwdriver or a ball peen hammer. The edge of the bearing should sit flush with the top of the plastic hub.
4. Re-assemble the wheel lining up the 2 large holes in the plastic disc with the two large holes in the inner hub. Re-install the 6 screws snugly, being careful not to overtighten.
5. Re-install the wheel on the axle - hit the links!

This procedure only takes about 5-10 minutes and is quite easily accomplished.

Par Caddy Canada, 63 Willow Dr., Barrie, Ontario. L4N 0E4
Email: info@parcaddy.ca

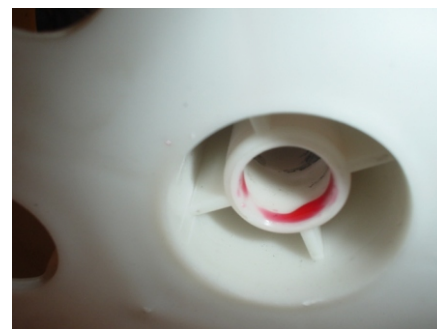
1



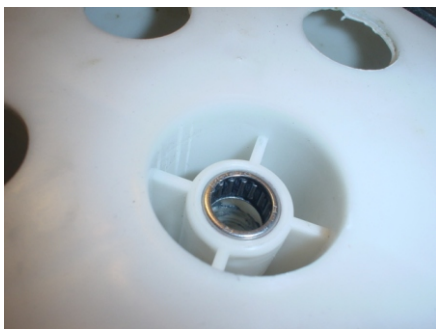
2



3



4



5

